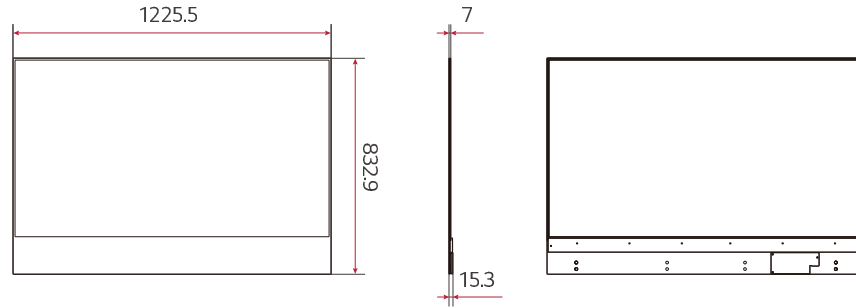
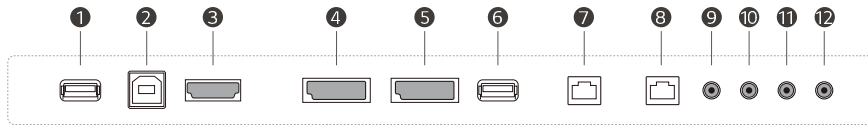


## DIMENSION (unit: mm)



## CONNECTIVITY (Signage Box)



- |                  |                    |               |
|------------------|--------------------|---------------|
| ① TOUCH USB IN   | ⑤ DP OUT           | ⑨ IR IN       |
| ② TOUCH OUT (PC) | ⑥ USB IN (USB 2.0) | ⑩ RS-232C IN  |
| ③ HDMI IN        | ⑦ LAN IN           | ⑪ RS-232C OUT |
| ④ DP IN          | ⑧ LAN OUT          | ⑫ AUDIO OUT   |



## SPECIFICATIONS

55EW5TF		
Panel	Screen Size	55"
	Panel Technology	OLED
	Native Resolution	1,920 × 1,080 (FHD)
	Brightness (Typ.)	150 / 400 nit (APL 100% / 25 %, Without Glass)
	Contrast Ratio	150,000 : 1
	Dynamic CR	No
	Color Gamut	BT 709 120 %
	Viewing Angle (H × V)	178 × 178
	Color Depth	1.07 Billion Colors (10bit)
	Response Time	1 ms (G to G)
	Surface Treatment (Haze)	No
	Operation Hours (Hours / Day)	18 / 7 (Moving Content Only)
	Portrait / Landscape	Yes / Yes
	Transparency	33% (Set)
Connectivity	Input	HDMI (HDCP 2.2), DP (HDCP 1.3), USB 2.0 Type A, USB 2.0 Type A (Touch Control Board Only)
	Output	DP, Audio, USB 2.0 Type B (Touch USB)
	External Control	RS232C In / Out, RJ45 (LAN) In / Out, IR In (External IR Receiver)
Mechanical Specification	Bezel Color	Matt Silver
	Bezel Width	79 / 79 / 79 / 144.5 mm (T / R / L / B)
	Weight (Head)	14.6 kg (Head) / 3.4 kg (Signage Box)
	Monitor Dimensions (W × H × D)	1,225.5 × 832.9 × 7.0 mm (Head) 782.8 × 238.4 × 34.7 mm (Signage Box)
	Monitor Dimensions with Stand (W × H × D)	No
	VESA™ Standard Mount Interface	No
	Depth	3.0 mm
	Protection Glass	Tempered / Chemical Strengthening
	Anti-Reflective	Yes
	Shatter-Proof	Yes
Key Features	Internal Memory (16GB), Temperature Sensor, FAN, webOS 4.0, Embedded CMS (Local Content's Scheduling, Group Manager), USB Plug & Play, Fail Over, Video Tag (4), Rotation (Screen Rotation), Gapless Playback, Setting Data Cloning, SNMP, ISM Method, Auto Set ID, Status Mailing, Control Manager, Crestron Connected <sup>®</sup> 1), PM Mode, Wake on LAN, HDMI-CEC <sup>2</sup> , SI Server Setting, Proximity	
Environment Conditions	Operation Temperature	0 °C to 40 °C
	Operation Humidity	10 % to 80 %
Power	Power Supply	AC 100 - 240 V ~, 50 / 60 Hz
	Power Type	Built-in Power
	Power Consumption	Typ. / Max. 250 W / 280 W BTU (British Thermal Unit) 853 BTU/h (Typ.), 955 BTU/h (Max.)
Sound	Speaker	No
Certification	Safety	CB, NRTL
	EMC	FCC Class "A" / CE / KC
	ErP	Yes (EU Only)
Media Player Compatibility	OPS Type Compatible	No
	OPS Power Built In	No
Software Compatibility	SuperSign CMS, SuperSign Control / Control+, SuperSign Media Editor, Signage365Care <sup>®</sup>	
Accessories (Basic)	Remote Controller, Power Cord, QSG, IR Receiver, Regulation Book, Phone to RS232C Gender, FFC Cables (1,600 mm × 4 ea for Connection Between Panel and Signage Box), HDMI Cable (3 M), Micro to A Type USB Cable (1.8 M for Connection Between Touch and Signage Box), A to B Type USB Cable (Touch Out), Tape (10 ea for Cabling / 10 ea BMI Gasket Tape), Screw (M4 × L22, 12 ea / M4 Nut 12 ea / M3 × L5.5, 8 ea / M3 × L3.5, 20 ea), Shield Cover Ass'y, Rubber Damper 4 ea, Touch Cable Holder 2 ea	

\* Dimensions & Jack Panels may differ from the above image, so please contact LG sales team to verify before ordering.

1) Network based control 2) Compatibility may differ by equipment 3) The availability can differ by region.  
\* Specification are subject to change without notice, so please contact LG sales team to verify before ordering.



Download  
LG C-Display+  
Mobile App  
Google Play Store

www.lg.com/b2b

www.youtube.com/c/LGCommercialDisplay

www.facebook.com/LGInformationDisplay

www.linkedin.com/company/lginformationdisplay

LG may make changes to specifications and product descriptions without notice.  
Copyright © 2020 LG Electronics Inc. All rights reserved. "LG Life's Good" is a registered trademark of LG Corp.  
The names of products and brands mentioned here may be the trademarks of their respective owners.

